

ProRox Industrial Insulation

Product Catalogue

General Product Information



ROCKWOOL stone wool products are made of basalt, a volcanic stone.

ROCKWOOL stone wool products are non-combustible with a melting point of approximately 1000°C. They are particularly suitable for thermal insulation, fire protection and sound reduction/absorption.

ROCKWOOL stone wool is inorganic and contains no nutritious substance. Therefore it will not be attacked by microorganisms. Stone wool will not rot and does not attract vermin.

No CFCs, HFCs, HCFCs or asbestos are used in the manufacture of ROCKWOOL stone wool products.



บริษัท เอ็มโอดี ซัพพลายเออร์ แอนด์ เซอร์วิส

91/15 ถนนสุวินทวงศ์ แขวงมีนบุรี เขตมีนบุรี กทม.10510

Tel. 02-543-7880-1 081-649-4066 www.modroof.com



Dimensions

Standard Width: 600 mm

Thickness mm	Length mm
25	5000
30	5000
40	5000
50	5000
60	4000
70	4000
75	4000
80	3000
90	3000
100	3000

Standard Size

Standard Size

Note: Above sizes are based upon the production capabilities of the Melaka manufacturing plant. For other manufacturing plant's production capabilities on sizes, please refer to your local sales representative

Applications

ProRox WM 950^{SA} is a lightly bonded stone wool mat stitched on galvanised wire mesh using galvanised wire. The wired mat is suitable for thermal and acoustic insulation of industrial applications reaching high temperatures, such as industrial pipe work, boiler walls, furnaces and smoke ducts.

Compliance

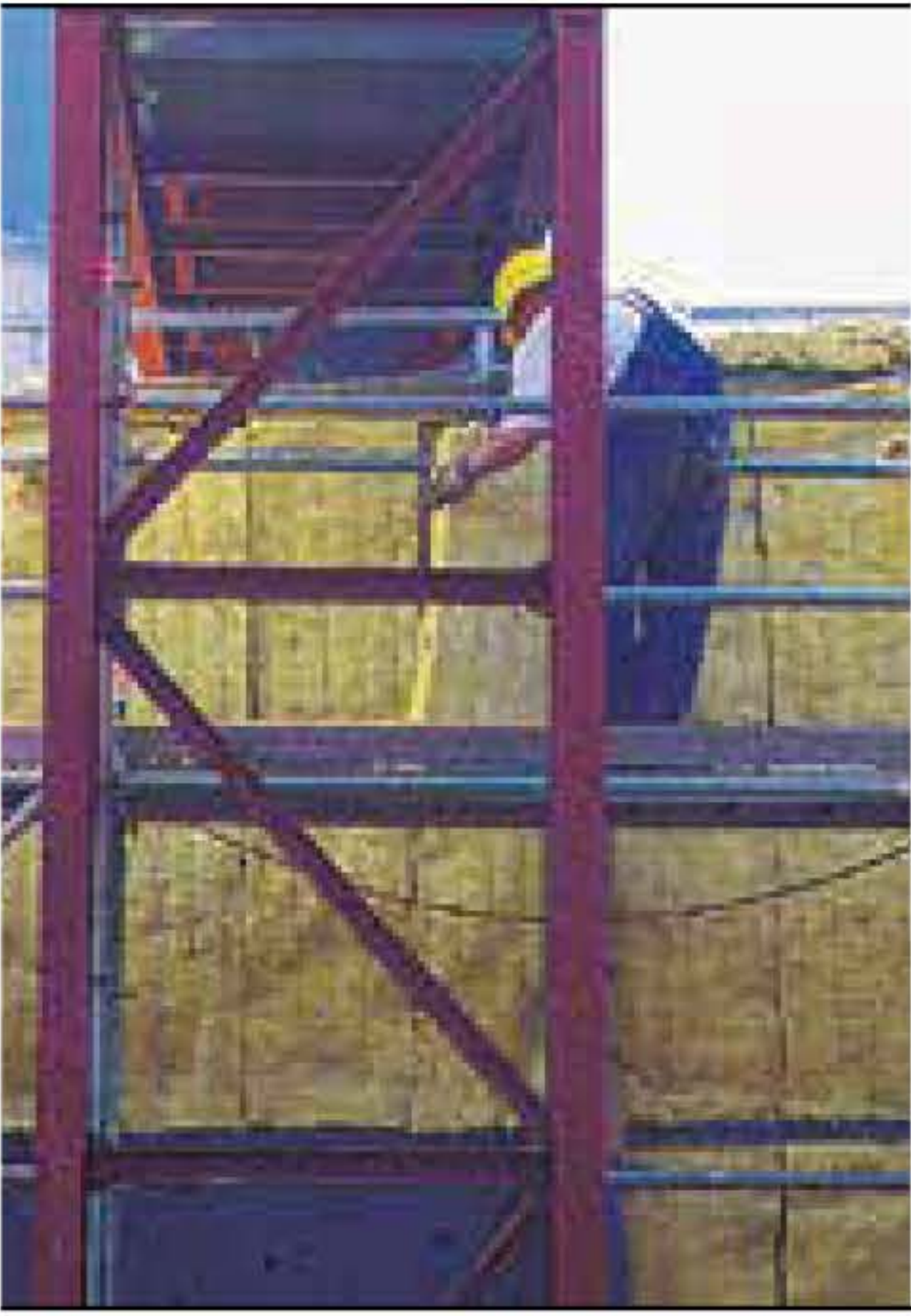
ProRox WM 950^{SA} Wired Mats comply with the requirements as set by internationally recognized standards like CINI 2.2.02 and ASTM C592 Type I, II and III.

Advantages

- Suitable for high temperature application
- Flexible application
- Available in a wide range of thicknesses
- Suitable for use over stainless steel

Product properties

	Performance							Standard
Thermal Conductivity	Mean Temp (°C)	50	100	150	200	250	300	ASTM C335
	λ (W/mK)	0.038	0.046	0.053	0.062	0.071	0.080	
Nominal Density	80 kg/m³							EN 1602
Maximum Service Temperature	650°C							ASTM C411/C447
Linear Shrinkage	Less than 2% (at max service temperature)							ASTM C356
Reaction to Fire	EuroClass A1							EN 13501-1 ASTM E84
	Surface burning characteristics; Flame spread = passed, Smoke development = passed							
pH	pH 7-12.5							ASTM C871
Chloride Content	Less than 10 ppm							ASTM C871 ASTM C692/C871
	Conforms to the stainless steel corrosion specification as per ASTM C795							
Moisture Absorption	Less than 1% weight							ASTM C1104/C1104M
Water Absorption	Less than 1 kg/m²							EN 1609



Dimensions

Standard Width: 600 mm

Thickness mm	Length mm
25	5000
30	5000
40	5000
50	5000
60	4000
70	4000
75	4000
80	3000
90	3000
100	3000

Standard Size

Standard Size

Note: Above sizes are based upon the production capabilities of the Melaka manufacturing plant. For other manufacturing plant's production capabilites on sizes, please refer to your local sales representative

Applications

ProRox WM 960^{SA} is a lightly bonded heavy stone wool mat stitched on galvanised wired mesh with galvanised wire. The wired mat is especially suitable for industrial installations such as high-pressure steam pipes, reactors, furnaces, etc. where high demands are made on the temperature resistance of the insulation.

Compliance

ProRox WM 960^{SA} Wired Mats comply with the requirements as set by internationally recognized standards like CINI 2.2.02 and ASTM C592 Type I, II and III.

Advantages

- Suitable for heavy duty applications which are exposed to high temperatures and high mechanical loads
- Resistant to high temperatures
- Flexible application
- Available in a wide range of thicknesses
- Suitable for use over stainless steel

Product properties

	Performance							Standard
Thermal Conductivity	Mean Temp [°C]	50	100	150	200	250	300	ASTM C177
	λ (W/mK)	0.037	0.042	0.048	0.056	0.065	0.073	
Nominal Density	100 kg/m³							EN 1602
Maximum Service Temperature	650°C							ASTM C411/C447
Linear Shrinkage	Less than 2% (at max service temperature)							ASTM C356
Reaction to Fire	EuroClass A1							EN 13501-1 ASTM E84
	Surface burning characteristics; Flame spread=passed, Smoke development=passed							
pH	pH 7-12.5							ASTM C871
Chloride Content	Less than 10 ppm							ASTM C871 ASTM C692/C871
	Conforms to the stainless steel corrosion specification as per ASTM C795							
Moisture Absorption	Less than 1% weight							ASTM C1104/C1104M
Water Absorption	Less than 1 kg/m²							EN 1609

Dimensions

Standard Width: 600 mm

Thickness mm	Length mm
25	5000
30	5000
40	5000
50	5000
60	4000
70	4000
75	4000
80	3000
90	3000
100	3000

■ Standard Size

Note: Above sizes are based upon the production capabilities of the Melaka manufacturing plant. For other manufacturing plant's production capabilites on sizes, please refer to your local sales representative

Applications

ProRox WM 970^{SA} is a lightly bonded heavy stone wool mat stitched on galvanised wired mesh with galvanised wire. The wired mat is especially suitable for industrial installations where high temperature and vibration resistance is required.

Compliance

ProRox WM 970^{SA} Wired Mats comply with the requirements as set by internationally recognized standards like CINI 2.2.02 and ASTM C592 Type I, II and III.

Advantages

- Suitable for heavy duty applications which are exposed to high temperatures and high mechanical loads
- Resistant to high temperatures
- Flexible application
- Available in a wide range of thicknesses
- Suitable for use over stainless steel

Product properties

	Performance							Standard
Thermal Conductivity	Mean Temp (°C)	50	100	150	200	250	300	ASTM C177
	λ (W/mK)	0.038	0.043	0.050	0.057	0.066	0.076	
Nominal Density	128 kg/m³							EN 1602
Maximum Service Temperature	750°C							ASTM C411/C447
Linear Shrinkage	Less than 2% (at max service temperature)							ASTM C356
Reaction to Fire	EuroClass A1							EN 13501-1 ASTM E84
	Surface burning characteristics; Flame spread=passed, Smoke development=passed							
pH	pH 7-12.5							ASTM C871
Chloride Content	Less than 10 ppm							ASTM C871 ASTM C692/C871
	Conforms to the stainless steel corrosion specification as per ASTM C795							
Moisture Absorption	Less than 1% weight							ASTM C1104/C1104M
Water Absorption	Less than 1 kg/m²							EN 1609

Note

All steel components exposed to a corrosive environment should be cleaned, degreased and coated with a protective finish.

Installation guidelines

Assembly

Cut the wired mat to length, so that the mat fits the pipe with slight pre-stressing. The closing joints must be staggered at an angle of at least 30 degrees to each other. The closing joints of the mats (lengthwise and circular) must be wired together using steel wire (min. 0.5 mm) or secured with mat hooks. Stainless steel pipes and pipes with a temperature of > 400°C should preferably be insulated with ProRox WM 950^{SA}, in which both the mesh and the stitching wire is stainless steel. If the mats are assembled in multiple layers, both the lengthwise and circular joints must be staggered ('masonry bond').

Support construction

Given the limited pressure resistance of wired mats, in most cases a support is required for the board cladding. As a guideline, assume that a support is required every 3 to 4 metres.

Finishing

The insulation should be finished with a metal (e.g. aluminium) cladding. Where necessary, expansion joints are provided to cater for expansion of the pipes. Both the lengthwise and circular joints are fastened with sheet-metal screws: hard aluminium or stainless steel 1/2", 8/metre. Close the expansion joints with a steel tensioning wire. Connections to mountings, head and end caps etc. should be made watertight using a suitable sealant.

